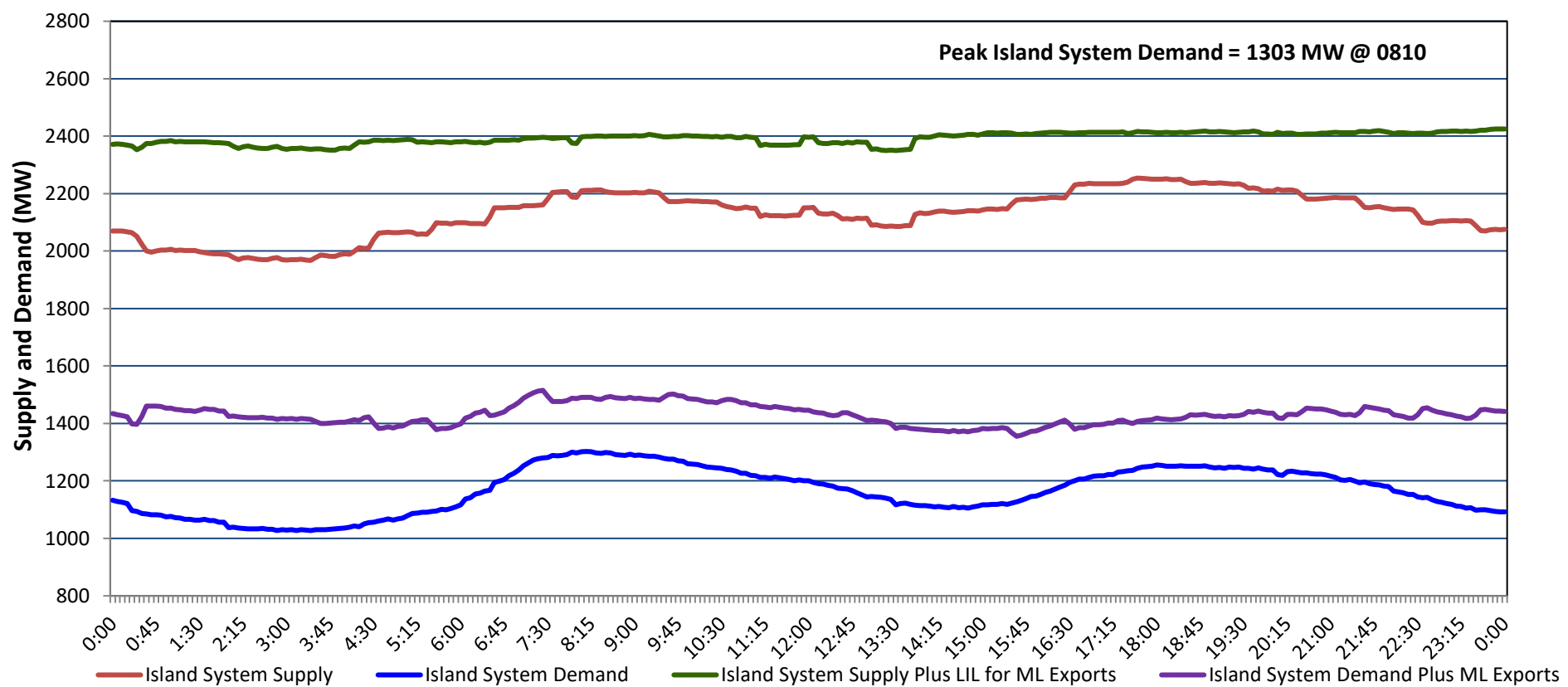


# Newfoundland Labrador Hydro (NLH) Supply and Demand Status Report Filed Thursday, February 20, 2025

## Section 1 Island Interconnected System - Supply, Demand & Exports Actual 24 Hour System Performance For Wednesday, February 19, 2025



### Island Supply Notes For February 19, 2025 <sup>1</sup>

- A At 0802 hours, February 19, 2025, Holyrood Unit 1 available at 90 MW due to forced derating (170 MW).
- B At 1109 hours, February 19, 2025, Hardwoods Gas Turbine available at 25 MW due to planned derating (50 MW).
- C At 1155 hours, February 19, 2025, Hardwoods Gas Turbine available at full capacity (50 MW).
- D At 1304 hours, February 19, 2025, Hardwoods Gas Turbine available at 25 MW due to planned derating (50 MW).
- E At 1348 hours, February 19, 2025, Holyrood Unit 1 available at 105 MW due to forced derating (170 MW).
- F At 1500 hours, February 19, 2025, Hardwoods Gas Turbine available at full capacity (50 MW).

## Section 2 Island Interconnected System - Supply, Demand & Outlook

Thu, Feb 20, 2025	Island System Outlook <sup>2</sup>	Seven-Day Forecast	Island System Daily Peak Demand (MW)	
			Forecast <sup>8</sup>	Adjusted <sup>6</sup>
Island System Supply: <sup>4</sup>	2,211 MW	Thursday, February 20, 2025	1,365	1,259
NLH Island Generation: <sup>3,7</sup>	1,630 MW	Friday, February 21, 2025	1,370	1,264
NLH Island Power Purchases: <sup>5</sup>	110 MW	Saturday, February 22, 2025	1,430	1,323
NP and CBPP Owned Generation:	215 MW	Sunday, February 23, 2025	1,395	1,289
LIL/ML Net Imports to Island: <sup>9</sup>	256 MW	Monday, February 24, 2025	1,385	1,279
		Tuesday, February 25, 2025	1,400	1,294
7-Day Island Peak Demand Forecast:	1,430 MW	Wednesday, February 26, 2025	1,280	1,175

### Island Supply Notes For February 20, 2025

- Notes:
1. Generation outages for running and corrective maintenance are included. These are not unusual for power system operations. They generally do not impact customer supply. Hydro schedules outages to system equipment whenever possible to coincide with periods when customer demands are low and sufficient supply reserves are available. However, from time to time equipment outages are necessary and reserves may be impacted.
  2. As of 0800 Hours.
  3. Gross continuous unit output.
  4. Gross output from all Island sources (including Note 3).
  5. NLH Island Power Purchases include: ML Imports, Exploits Generation, Rattle Brook, Star Lake, Wind Generation and capacity assistance (when applicable).
  6. Adjusted for interruptible load and the impact of voltage reduction when applicable.
  7. Due to limitations inherent in the design of combustion turbines, the output of combustion turbines may be reduced in the event that ambient temperatures exceed the threshold required for full rated output. This threshold is dependent on the design of each turbine.
  8. Does not include ML Exports.
  9. LIL Import sunk in the Island System. Actual LIL flows will be restricted by various system conditions including, but not limited to, Island Load, ML Exports and Avalon Unit status.

## Section 3 Island Peak Demand and Exports Information Previous Day Actual Peak and Current Day Forecast Peak

Wed, Feb 19, 2025	Island Peak Demand <sup>10</sup>	8:10	1,303 MW
	Exports at Peak		188 MW
	LIL Net Imports to Island		5,505 MWh
Thu, Feb 20, 2025	Forecast Island Peak Demand		1,365 MW

- Notes: 10. Island Demand is supplied by NLH generation and purchases, LIL Imports plus generation owned and operated by Newfoundland Power and Corner Brook Pulp & Paper (Deer Lake Power, DLP).